

**Swale Community
Safety Partnership**



Swale Community Safety Plan 2016-19

Contents Page

Section	Page Number
Introduction	2
Background	2
Key activities delivered over the past year	2-3
Strategic Drivers	3-4
Community Concerns	4
Priorities and key enablers for next 12 months <ul style="list-style-type: none">▪ Violence Against Women and Girls▪ Crime▪ ASB▪ Safeguarding▪ Troubled Families▪ Reducing Re-Offending	5 - 11
Action Plan 2016/17	12 - 16
Priority Champions	17
Target Selection Process	18-19
Risk Assessment	20
Partnership Structure	21

Contacting the CSP

Please email us at csu@swale.gov.uk or phone 01795 417193.

Visit the website for more information on the Partnership, along with updates on our activities and key crime reduction advice – www.swale.gov.uk/community-safety

Swale Community Safety Plan 2016-19

1. Introduction

The Swale Community Safety Plan is a rolling three year document, which highlights how the Community Safety Partnership (CSP) plans to tackle community safety issues that matter to the local community.

This Plan is revised on an annual basis, through reviewing information provided from a wide range of organisations in a strategic assessment, to ensure that current issues can be taken into account into the activities undertaken by the CSP. These activities are also informed through consultation with the community, along with front line practitioners. It also takes into account local emerging issue and new legislative requirements.

2. Background

Swale CSP is a statutory body bringing together a number of public sector agencies to tackle crime, disorder, anti-social behaviour, substance misuse and reduce re-offending. These agencies include Swale Borough Council, Kent County Council, Kent Police, Kent Fire and Rescue Service, Probation services, and Clinical Commissioning Groups, working closely with the local housing associations such as AmicusHorizon, voluntary and community sector organisations, HM Prison Service, and HM Court Service.

3. Key activities delivered during the previous year

A number of activities have been delivered by the Community Safety Partnership in order to address its priorities for 2015/16. Key activities that have been delivered include the following.

- **Support to domestic abuse victims:** domestic abuse victims within the Borough have continued to be supported, with a large range of services and access points in place. The Independent Domestic Violence Advisor (IDVA) has supported the highest risk victims. A One Stop Shop has been developed for Sheppey, along with the continuing provision in Sittingbourne. The 'Switch-Up Adolescent Parent Violence' programme has been developed and being delivered for the Borough. A communications Campaign was run as part of the International Day for Elimination of Violence Against Women and Girls on 25 November, which saw many organisations wearing orange to raise awareness of domestic abuse services.
- **Partnership Training:** a variety of training sessions have taken place for staff across all partnership agencies this year, including inputs on domestic abuse; child sexual exploitation; modern slavery and trafficking; preventing extremism; and substance misuse.
- **Support to victims of crime:** the Community Safety Unit (CSU) has continued to undertake the delivery of crime reduction campaigns in relation to burglary. This has included providing Smartwater to vulnerable victims and their neighbours. Kent County Council (KCC) Wardens have also been providing support to vulnerable adults who could become targets of scamming.

Agreement for additional Automatic Number Plate Recognition (ANPR) cameras to be installed within the Borough is now in place from Kent Police.

- **ASB Campaigns:** the CSU continues to ensure that support is in place for all victims of ASB, and that where required multi-agency operations have been undertaken to tackle likely peak periods. This has included for the school summer holidays and Halloween.
- **Troubled Families:** the Troubled Families Programme has moved into Phase 2 of delivery, with a greater number of referral criteria for families, allowing for support to be provided for a wider variety of concerns. A Local Delivery Model has also been in place to support Swale families, including the provision of family finance work.
- **Supporting offenders to reduce reoffending:** a Reducing Reoffending Partnership group has been formed to support offenders to address their needs, particularly for accommodation and employment. A welfare fund has also been established to allow for the purchase of identification and other small items to support offenders into accommodation or employment. A pilot protocol has also been created to work to increase information sharing with housing services in relation to prisoner releases, aiming to prevent high risk offenders presenting as homeless.
- **Community Engagement:** the Voluntary and Community Sector continue to be engaged with the delivery of community safety priorities. Work has also been undertaken to engage with those residents from new and emerging communities through a joint project with Gravesham and Medway Councils, along with Kent Fire and Rescue Service.

4. Strategic Drivers

Key strategic drivers have been identified which will impact on the work of the CSP over the next 12 months include the following.

- (i) **Engagement with Police and Crime Commissioner (PCC):** PCC elections will be taking place in May 2016, and the CSP will need to continue to engage with the Commissioner beyond this point. The Police and Crime Plan is currently being refreshed, with a large cross-over in priorities. Following the recent announcement by the Government that PCCs will have responsibility locally for Fire and Rescue services, there may be implications for the Partnership as this new governance and management scheme is implemented.
- (ii) **Counter Terrorism and Security Act 2015:** this Act has placed a duty on public sector organisations to 'have due regard for the need to prevent people being drawn into terrorism'. A Prevent Duty Implementation Plan was drawn up and implemented for the Partnership, but further awareness-raising work, particularly with young people and parents, needs to occur.
- (iii) **Modern Slavery Act 2015:** this Act has provided law enforcement agencies with tools to fight modern slavery, and requires other public sector organisations the need to identify and support victims of trafficking/slavery. Awareness-raising training for officers across various agencies has taken place; however, further work to raise knowledge of this issues needs to occur.

- (iv) **Serious Organised Crime Act 2015:** this Act builds on existing legislation to tackle serious organised crime, and includes provisions to strengthen support and protection of vulnerable groups. New Government advice on tackling gang violence has also been released. There is a need within Swale to increase the intelligence picture on these issues, both with officers and communities.
- (v) **Psychoactive Substances Bill:** due to become an Act in April 2016, this will make it an offence to produce, supply and import or export psychoactive substances. The implications of this Act for Swale and wider partners will need to be considered, including any impact on communities and the prison population.

5. Community Concerns

A community priority setting questionnaire was circulated through a number of mediums to ask the community their feelings on a wide range of community safety issues, and what their top priorities are for the Partnership to tackle.

The ‘tell us what matters to you’ questionnaire received 249 responses between August and October 2015, the most since the survey began in 2010.

When asked for their top three community safety issues to be tackled, the following categories had the greatest number listed.

Community Safety Issue to be Tackled	No. of Responses
ASB	49
Speeding	27
Burglary	25
Drugs	20
Litter	13

Respondents were asked how much of a problem a number of specific community safety issues are in the local area, and rate them either a high, medium or low problem or not a problem at all.

Those problems that were ranked as high included: ASB, Burglary Other than Dwelling, Dog Fouling, Fly tipping, and Speeding. In comparison with the table above, Burglary Dwelling was overall rated as a low problem, as were Drugs. Of the 27 categories listed, 21 were deemed as a ‘low’ level of issue in their local area.

Some of these ‘low’ categories are those that might be considered hidden crimes that take place behind closed doors, and for which awareness with communities needs to be raised.

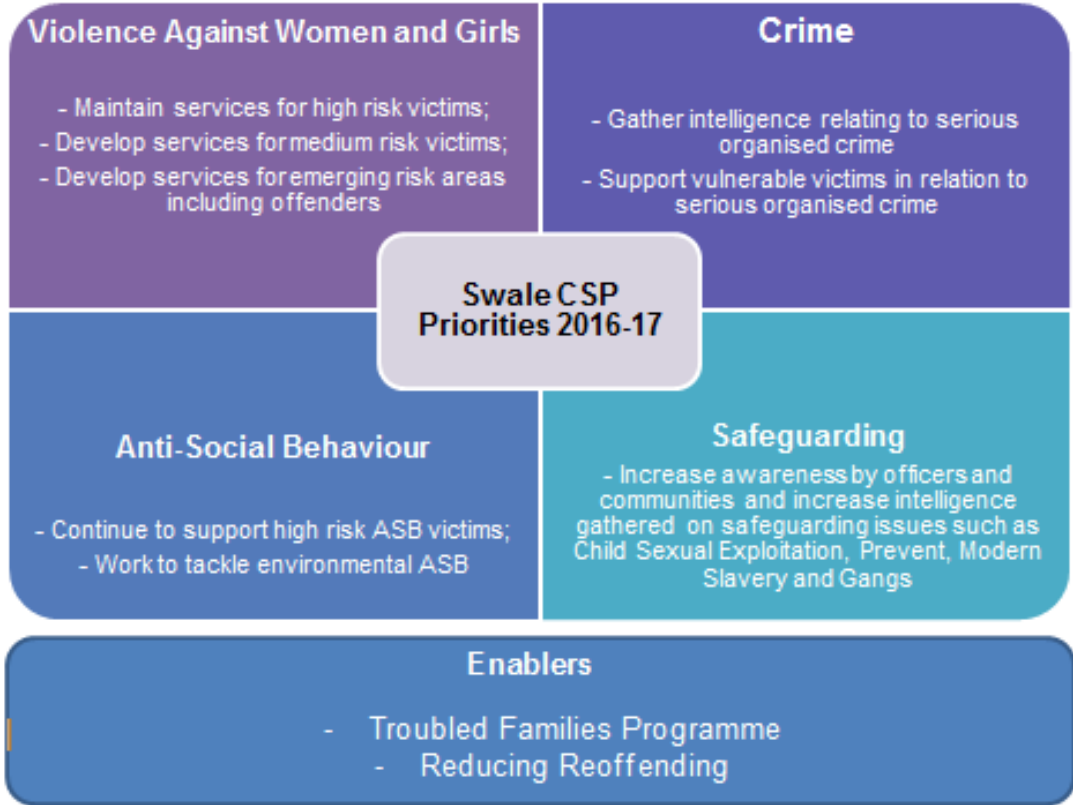
6. Priorities for 2016/17

A Strategic Assessment is compiled annually to show progress for the Partnership against its current priorities, along with identifying emerging issues, and recommended priorities for the next 12 months.

The priorities for 2016/17 for the CSP were selected by members of the Partnership following a Strategic Planning Session in January 2016, taking into account the findings from the strategic assessment, along with community concerns and front line practitioner’s views.

A series of enablers have also been identified which are key initiatives that will support the delivery of all of the priorities.

Swale CSP Priorities and Enablers 2016/17



Further details on how these priorities will be achieved are shown on the following pages, which include a summary of the issue; clear actions to be undertaken; and how performance will be measured. Details of the enablers are also discussed including what the CSP will do to achieve these.

All data generally relates to the period October 2014 – end September 2015.

Summary of Swale CSP Priorities

Priority – Violence Against Women and Girls

Summary of issue: The total number of domestic abuse incidents has increased to 2622, with Swale having the second highest in Kent in terms of volume. However, this should be seen in a positive light as victims have the confidence and knowledge to report. The percentage of repeat victimisation has decreased to 23.0%, and is now the second lowest in Kent. This is also indicative of the positive impact support services have when engaged with victims.

The number of support services for victims within the Borough has continued to increase over the past year; however, financial stability of these services remains a concern. A County Independent Domestic Violence Advisor (IDVA) contract has been in place for the last three years, ensuring support to the highest risk victims; however, this provision is being recommissioned for April 2017. Access to a wide range of support services continues through the provision of One Stop Shops, and remains a priority to ensure all victims can seek support.

The Violence Against Women and Girls Strategic Group has continued to operate and identify emerging issues. In previous years this has included the need to support victims who experience abuse from their adolescent children, for which the Switch-Up Programme is now in place. Moving forward into 2016/17, it is support for victims of abuse from their adult sons/daughters that needs to be developed, along with support for perpetrators.

Activities to tackle issue: Activities that will be undertaken by the Partnership to tackle this priority include:

- manage the Violence Against Women and Girls Group to provide strategic overview and co-ordinate services in Swale;
- ensure Independent Domestic Violence Advisor (IDVA) provision is in place for high risk victims and engaged with all relevant partners;
- deliver a practitioners group for domestic abuse staff across all partners;
- ensure services are in place for medium and standard risk victims, with ease of access;
- develop perpetrator programmes for Swale residents; and
- development of support for victims experiencing abuse from their adult son/daughter.

Performance measures:

- % repeat victims of domestic abuse
- Number of incidents of domestic abuse
- Number of incidents of stalking

Priority – Crime

Summary of issue: All crime has seen a reduction in incidents by 7% to 9,533 incidents. Positive performance can also be seen in relation to burglary – both within dwellings and other than dwellings (sheds and outbuildings), which have seen reductions of 45% and 37% respectively. This has been in part due to issues that had arisen with crime recording standards in previous years, but also due to the work of local Policing teams and the Community Safety Unit. Given the volume of issues and level of concern regarding these issues by the community, the Partnership will continue to undertake activity to address spikes in incidents within these areas.

Shoplifting is one crime type that has grown significantly, with a 24% increase in incidents; however, support can be given to retailers to tackle this issue through security advice and support from the local Business Crime Reduction Partnership, SwaleSafe.

The level of crime experienced by residents in the rural parts of the Borough is also recognised, and the Partnership will continue to play a role in supporting these rural communities.

With the development of the National Serious Organised Crime Strategy in 2015, and a production of a Serious Organised Crime Profile for Kent, there is an increasing need for the Partnership to support the tackling of Serious Organised Crime (SOC).

The National Crime Agency (NCA) defines SOC as: “Serious Crime planned, coordinated and conducted by people working together on a continuing basis. Their motivation is often, but not always, financial gain. Organised criminals working together for a particular criminal activity are called Organised Crime Groups (OCGs)”.

The Partnership has a role to play in intelligence gathering from communities to better understand the local picture and prevalence; identifying and safeguarding vulnerable children and adults; using powers to disrupt criminal activity; and protecting communities from activities such as fraud and cyber crime. There is also a close linkage with the ‘Safeguarding’ priority, and the work to address modern slavery and child sexual exploitation.

Through increasing internet usage, there is an increasing prevalence of cybercrime, including fraud, which needs to be explored locally and support provided to communities to better understand these issues and protect themselves.

Activities to tackle issue: Activities that will be undertaken by the Partnership to tackle this priority include:

- delivery of crime reduction campaigns for acquisitive crime types following hotspots or spikes in incidents;
- delivery of activity to raise awareness of Serious Organised

Crime with partners, and undertake activities to disrupt activity and gather community intelligence; and

- support to tackle rural crime.
- Number of incidents of all crime
- Number of incidents of burglary dwelling
- Number of incidents of burglary other than dwelling
- Number of Serious Organised Crime Groups (Swale)

Performance measures:

Priority – Anti-Social Behaviour

Summary of issue: The total number of ASB incidents reported to Kent Police had reduced by 7%, although the volume remains high at 4,059 incidents, with an additional 1,025 incidents reported to AmicusHorizon.

The level of environmental ASB incidents, including fly tipping and noise, continues to remain relatively high, with fly tipping issues also increasing nationally. It has also been recognised that there is an emerging issues with lorry parking in specific locations within the Borough, causing a number of associated environmental issues. This is an issue being experienced across the County, and Swale CSP will be working with other districts and partners to work to resolve this.

ASB continues to be a high concern for the community as recognised in the community priority setting questionnaire that was undertaken. In particular, dog fouling and speeding being the highest concerns. The Partnership will work to address both of these issues through communication campaigns, either led at a local level or County level by organisations such as KFRS.

Activities to tackle issue: Activities that will be undertaken by the Partnership to tackle this priority include:

- provision of support to high risk ASB victims;
- delivery of ASB Reduction Campaigns/Task and Finish Groups;
- support to activities to tackle environmental ASB;
- delivery of Positive Ticketing Pilot;
- support KFRS in delivery of speeding/road safety initiatives; and
- continued delivery of mobile CCTV system.

Performance measures:

- Number of incidents of ASB (reported to Kent Police and AmicusHorizon)
- Number of incidents of rowdy/nuisance gatherings; neighbour disputes; and drunk or rowdy behaviour
- Number of incidents of deliberate fires
- Number of incidents of environmental ASB (specifically noise

and fly-tipping)

- The % people who consider ASB to be a very or fairly large problem in their local area (Local Area Perception Survey)
- ASB Satisfaction at a Kent Level

Priority – Safeguarding

Summary of Issue: This Safeguarding priority has been introduced for 2016/17. It seeks to address a number of emerging issues that relate to the safeguarding of vulnerable people. These include tackling Child Sexual Exploitation; Modern Slavery and Trafficking; and tackling gangs and Preventing Extremism. For all of these issues, there is either legislation requiring partner organisations to seek to identify and support the victims, or a level of data to indicate that the issue is prevalent in Swale.

The number of reports of Child Sexual Exploitation (CSE) to both local and national agencies has been increasing, and can be closely linked to levels of missing children, for which there has been a large increase in Swale. Incidents of CSE have been reported to Kent Police. Operation Willow has been convened for the County to tackle this issue.

For Modern Slavery and trafficking, along with Preventing extremism, there are statutory duties to report concerns. The prevalence of each within Swale is believed at present to be low. However, it is important to continue to increase awareness in relation to these issues, in particular grooming of vulnerable groups.

Gang activity within Kent has been increasing, including specifically within Sheerness. Operation Jupiter has been in place led by Kent Police to tackle this, with some success in disruption. However, the confidence of communities is needed in not only reporting concerns but in supporting prosecutions.

With all of these issues, there is a need to increase understanding with partners and communities in order to build our understanding of the picture and prevalence within Swale. This will be addressed through training, along with communication campaigns.

There is also a need to ensure that victims are confident to come forward, with services in place to support them. Vulnerable groups have been identified as being those from emerging communities, along with young people. Specific work to engage with these groups will be undertaken throughout the year.

Activities to tackle issue: The main activities as part of the programme for the next year includes:

- delivery of campaigns to both partners and communities to raise awareness of modern slavery/trafficking, gangs and grooming risks;

- delivery of projects to specific vulnerability groups such as emerging communities and young people;
- review reports of safeguarding concerns to partners, where appropriate, to identify lessons learnt and improve processes;
- delivery of training inputs to partners as required; and
- review findings from Kent Children Safeguarding Board's review of Operation Lakeland.

Performance Measures: To be confirmed following discussions with partners as to data recorded in relation to each of these issues, and what can be shared on a regular basis.

Enabler – Troubled Families Programme

Summary of enabler: The Troubled Families programme continues and is within the first year of Phase 2, with a target of 1,794 families to be engaged within Swale over five years.

The programme has identified 254 families against its target as of October 2015, largely from the KCC Early Help and Preventative Services Units. Of those families engaged, a great number of them have issues with children who have a large level of absence from school, or a behavioural concern for at least one child.

Commissioning of local work to support the delivery of the programme is being undertaken, including for Family Finance Work, and to establish a pilot that will seek to tackle children's behaviour within a home setting where they are at risk of exclusion from school.

Activities: The main activity as part of the programme for the next year will be to ensure the effective implementation of the Troubled Families Programme within Swale.

Performance measures:

- Number of families engaged with Troubled Families Programme in Swale
- % families against the target for which a Payment By Results claim have been submitted

Enabler – Reducing Reoffending

Summary of enabler: The Partnership has worked to address the needs of offenders, with their accommodation and employment needs having been prioritised by the Reducing Reoffending Group. In particular, there is a lack of provision of supported accommodation for offenders with a high level of need, for which the Group will be working with KCC to support their recommissioning of service for this group.

The Integrated Offender Management (IOM) process continues to be developed, with good engagement by partners. A welfare fund has been established and will be developed over the next year to provide support to offenders to gain employment and accommodation through, for example, the provision of identification.

Support continues to be provided to offenders by Probation Services, including the Kent Surrey and Sussex Community Rehabilitation Company and the National Probation Service. Their processes continue to be developed, and a protocol has been agreed to be piloted to support prisoners being released with an accommodation need. Additionally, work is being undertaken to better understand the use of legal highs by offenders, and the impact on their mental health.

- Activities:** The main activities as part of the programme for the next year includes:
- manage the Reducing Reoffending Group to provide strategic overview and work to address offenders needs within Swale;
 - continue implementation of effective Integrated Offender Management mechanisms;
 - monitor the implementation of the prison release protocol;
 - support KCC in their recommissioning of offender homelessness provision; and
 - consider approaches to tackle impact of substance misuse, including legal highs.

Performance measures: To be confirmed following discussions with Probation Services.

7. Action Plan 2016/17

No.	Action	Desired Outcome	Key Milestones	Timescales	Lead agency
Priority 1: Violence Against Women and Girls (VAWG)					
1.1	Manage the Violence Against Women and Girls group to provide strategic overview and co-ordinate services in Swale.	Strategic oversight of VAWG issues in Swale achieved including gaps or issues with services	Mapping exercise reviewed on quarterly basis. Management of Flight Fund Develop SOP for Prison release information to safety plan victims	Quarterly	Swale CSU
1.2	Ensure IDVA provision is in place for high risk victims and engaged with all relevant partners	Reduction in repeat victimisation of domestic abuse victims	Agreement of procurement route for IDVA provision. IDVA provision in place Monitoring of impact of IDVA provision.	Apr 16 Apr 16 Quarterly	Swale BC
1.3	Deliver a practitioners group for domestic abuse staff across all partners	Strengthen frontline engagement services and continue to build relationships	Quarterly meetings delivered	Quarterly	New Leaf Support
1.4	Ensure services are in place for medium and standard risk victims, with ease of access	Increase reporting of domestic abuse incidents, including by those from emerging communities	Annual review of OSSs Support partner engagement in OSSs and Drop-Ins Pilot of volunteer translator service at Sheppey OSS	November 16 Weekly By Sept 16	SATEDA
1.5	Development of perpetrator programmes for Swale residents	Ensure Swale perpetrators have access to suitable programmes to work to reduce their offending	Review evaluation of CRC pilot programme Develop proposal for Swale programme Undertake pilot programme	Apr 16 Jun 16 By Sept 16	VAWG group
1.6	Development of support for victims experiencing abuse	Reduction in domestic abuse incidents	Delivery of pilot programme Evaluation of programme	By Sept 16 By Oct 16	Kent Police/ SATEDA

	from their adult son/ daughter	experienced by these victims	Seek funding for continuation	By Mar 17	
Priority 2: Crime					
2.1	Delivery of Crime reduction campaigns for acquisitive crime types following hotspot or spike in incidents	Reduction in number of incidents of acquisitive crime	Campaigns undertaken as required for each crime type; Support to Swalesafe and retailers in tackling shoplifting.	Ongoing Ongoing	Swale CSU
2.2	Delivery of activity to raise awareness of Serious Organised Crime (SOC) with partners and undertake activities to disrupt activity and gather intelligence.	Increased understanding of SOC by partners and communities; reduction in SOC activities taking place.	Delivery of training input to partners on SOC and their role Intelligence gathering and analysis to better understand Swale picture (including CCTV operators, Licensing and Housing partners) Establish mechanism with Lead Responsible Officers to provide support to deliver 4P plans to tackle OCGs. Raising awareness of SOC types with communities and partners, through communication campaigns such as Crimestoppers and other mechanisms. Develop fraud awareness campaign	By May 16 Ongoing Ongoing Ongoing June 2016	Swale CSU
2.3	Support to tackle rural crime	Reduction in rural crime	Quarterly Rural Policing Meetings undertaken Delivery of an increased number of ANPR cameras Tackling of equestrian crime Ensure crime reduction input into Rural Bulletin.	Quarterly By Mar 16 Ongoing Quarterly	Swale CSU/Kent Police

Priority 3: ASB					
3.1	Provision of support to high risk victims of ASB	Reduction in ASB and increased satisfaction of victims	Weekly case management by CSU Quality Assurance of cases by Project and Performance Group ASB Campaigns in hotspot locations/peak periods as required	Weekly Quarterly As required	Swale CSU
3.2	Delivery of ASB Reduction Campaigns/Task and Finish Groups	To reduce ASB in specific hotspots/periods	Delivery of ASB campaigns as required Halloween/School Holiday Operations Lorry Parking Task and Finish activity Deliberate Fire activities as required Targeted outreach to tackle youth nuisance/legal high use	Ongoing	Swale CSU/KFRS
3.3	Delivery of Sheerness enforcement project	Reduction in environmental ASB within Marine Town in Sheerness, through use of new ASB Tools and Powers	Month of enforcement action Review of action taken Creation and consultation for PSPO Review impact of PSPO	May 16 June 16 By Sept 16 Mar 17	Swale CSU/SBC ERT
3.4	Delivery of Positive Ticketing pilot	To reward positive behaviour in young people and build engagement with uniformed services	Project Planning Project start Six month evaluation	Apr-June 16 July 16 Jan 17	KCC Wardens
3.5	Support KFRS in delivery of speeding/road safety initiatives	To reduce incidents of speeding and road traffic collisions; and assure community that speeding is being actioned.	Agreement of action plan Delivery of action plan Communication campaign support	May 16 By Mar 17 Ongoing	KFRS
3.6	Continue delivery of a mobile	Reduction in ASB and	Monitoring of service	Ongoing	Swale CSU

	CCTV system and other evidential capture mechanisms	Crime. Increased satisfaction with service by partners.	Continuation of other evidential capture as needed		
3.7	Continue to support activities to tackle environmental ASB including noise, fly tipping and dog fouling	Reduction on fly tipping, litter, noise and other environmental issues	<p>Bag It, Bin It, Win It campaign</p> <p>Noise Action Week</p> <p>Other campaigns throughout the year, including awareness raising of processes and actions that can be taken.</p> <p>Deployment of mobile CCTV in marine town to tackle fly-tipping</p>	Ongoing	SBC ERT
Priority 4: Safeguarding					
4.1	Delivery of campaigns to both partners and communities to raise awareness of modern slavery/trafficking, gangs and grooming risks	To raise awareness of modern slavery/trafficking and grooming (radicalisation and CSE) with partners and communities including with victims to build confidence and encourage reporting	<p>Partner facing communication campaign</p> <p>Community facing communication campaign</p> <p>Taxi driver CSE and Modern Slavery campaigns</p>	<p>By June 16</p> <p>By Aug 16</p> <p>By May 16</p>	Swale CSU
4.2	Delivery of projects to specific vulnerability groups including emerging communities and young people	Delivery of activities to increase understanding of grooming/slavery/trafficking issues and build confidence to come forward and seek advice/support	<p>Inputs to young people/parents on grooming</p> <p>Continuation of emerging communities project with Gravesham and Medway</p> <p>Targeted communication campaigns</p> <p>Deliver of interventions to support Unaccompanied Asylum Seeking Children as required.</p> <p>Delivery of support to vulnerable victims</p>	<p>Sept 16</p> <p>Sept 16</p> <p>Ongoing</p> <p>Sept 16</p> <p>Ongoing</p>	Swale CSU

			as required.		
4.3	Review reports of modern slavery/trafficking to partners, where appropriate, to identify lessons learnt and improve processes	To better understand local prevalence of these issues and determine if processes need to be amended to better support victims.	Quarterly review of referrals/intelligence to partners by Project and Performance Group.	Quarterly	Project and Performance Group
4.4	Delivery of training inputs as required to partners	To raise awareness with partners of these safeguarding issues and increasing their understanding and community intelligence gathered.	Online Safety input Gangs input Other inputs as required by partners.	April 16 May 16 Ongoing	Swale CSU
4.5	Review findings from KCSB review of Operation Lakeland	To better understand lessons learnt from Operation Lakeland (to tackle CSE) and implement within Swale as required.	Operation Lakeland review to be shared Discussion on lessons learnt to be undertaken and local implementation as required.	By Mar 17	Project and Performance Group
Enabler 1: Troubled Families					
5.1	Ensure effective implementation of Troubled Families Programme in Swale	Reduction in offending behaviour, exclusions, worklessness, domestic abuse, children needing help and improvement in their health.	Continued engagement of families Delivery of family finance work and procurement of other specific services as required for families using Local Grant. Payment By Results claims submitted Quarterly feedback to CSP Executive	By Mar 17	Kent County Council; Swale Borough Council
Enabler 2: Reducing Offending					
6.1	Manage the Reducing reoffending Group to provide strategic overview and work to	To reduce reoffending through addressing offender needs and	Continuation of the welfare fund Monitor the implementation of the pilot	Quarterly	Swale CSU

	address offenders needs within Swale	increased engagement of partners within this agenda	prison release protocol Delivery of projects to tackle accommodation and employment needs of offenders		
6.2	Continued implementation of effective IOM mechanism	Reduced offending by those engaged on IOM	Continued delivery of IOM and integration into offender hubs. Identification of development opportunities for local scheme Delivery of improvements as required Engagement by wider range of partners	Ongoing	KSS CRC/ Kent Police
6.3	Monitor the implementation of the pilot prison release protocol	To support offenders with mental health needs and address their accommodation needs	Monitor and evaluate pilot protocol	By Sept 16	Swale CSU
6.4	Support KCC in their recommissioning of homelessness provision	To ensure that provision is made for supported accommodation for offenders with a high level of need	Data collection exercise to demonstrate local need Respond to consultation on contract model New provider(s) in place	By Mar 17	Reducing Reoffending Group
6.5	Consider approaches to tackle impact of use of legal highs/ substance misuse	Increased understanding of impact of substance misuse on reoffending and how this can be tackled.	Consider implications of Psychoactive Substances Bill; Input into recommissioning of substance misuse support services including availability of needle exchange. Input to partners on legal highs/dual diagnosis and mental health.	June 16 By Mar 17 Sept 16	Reducing Reoffending Group

8. Priority Champions

Lead officers have been assigned to each of the priorities and enablers within this Community Safety Plan. These officers will take the strategic lead for that priority or enabler. The table below identifies these lead officers for 2016/17.

Priority/Enabler	Lead Officer
Violence Against Women and Girls	Regional Director – Kent, AmicusHorizon
Crime	CSU Inspector, Kent Police
ASB	CSU Inspector, Kent Police
Safeguarding	Economy and Community Services Manager, Swale Borough Council
Troubled Families	Economy and Community Services Manager, Swale Borough Council
Reducing Reoffending	Senior Probation Officer, Kent Surrey and Sussex Community Rehabilitation Company

9. Target Selection Process 2016/17

Key Performance Indicators and management data have been selected with agreement by the Partnership, based upon those set by individual partners but identifying where the CSP can best add value. Performance against these indicators will be reported quarterly to the CSP Executive. Population and Household figures should be calculated using the latest ONS estimates.

Performance Indicators

Priority	Performance Indicator	Agency	Target (15/16)	Target Met?	Target 2016/17		
					Most recent Data (end Dec 15)	Target 2016/17	Comment
Violence Against Women and Girls	Repeat % Victims of Domestic Abuse	Kent Police	25.5%	Yes	23.7%	23.7%	Maintain current position
Crime	Number of incidents of all crime per 1,000 population	Kent Police	60.7	No	69.1	65.1	To reach average position for most similar group (based upon end Dec rolling data).
Troubled Families	Number of families engaged with programme	Kent County Council	258	No	175	516	Swale target set as part of Troubled Families Programme for entirety of Phase 2 (5 years) of 1,292. Therefore suggested target for this year is two fifths of this figure (years 1 and 2).

Management Data Indicators

Priority/Enabler	Indicator Details	Agency	Baseline
			End Dec 2015
Violence Against Women and Girls	Number of Incidents of Stalking	Kent Police	8
Violence Against Women and Girls	Number of Incidents of Domestic Abuse	Kent Police	2738
Crime	Number of incidents of burglary dwelling per 1000 households	Kent Police	6.4
Crime	Number of incidents of burglary other than dwelling per 1000 population	Kent Police	5.7
Crime	Number of incidents of shoplifting per 1000 population	Kent Police	8.7
Crime	Number of Serious Organised Crime Groups (Swale)	Kent Police	U/A
ASB	Number of incidents of ASB per 1000 population	Kent Police	29.4
ASB	Number of incidents of rowdy or nuisance gatherings	Kent Police	1341
ASB	Number of incidents of neighbour disputes	Kent Police	750
ASB	Number of incidents of drunken or rowdy behaviour	Kent Police	888
ASB	Number of incidents of deliberate fires	KFRS	257
ASB	Number of incidents of noise incidents	Swale Borough Council	720
ASB	Number of incidents of fly tipping	Swale Borough Council	3005
ASB	The % people who consider ASB to be a very or fairly large problem in their local area	Local Area Perception Survey	16%
ASB	ASB Satisfaction at a Kent Level	Kent Police	79.9%
Safeguarding	To be agreed following discussions with partners	TBC	U/A
Troubled Families	% of target cohort for which Payments by Results has been claimed	Kent County Council	TBC
Reducing Reoffending	To be agreed following discussions with Probation Services	KSS CRC	U/A

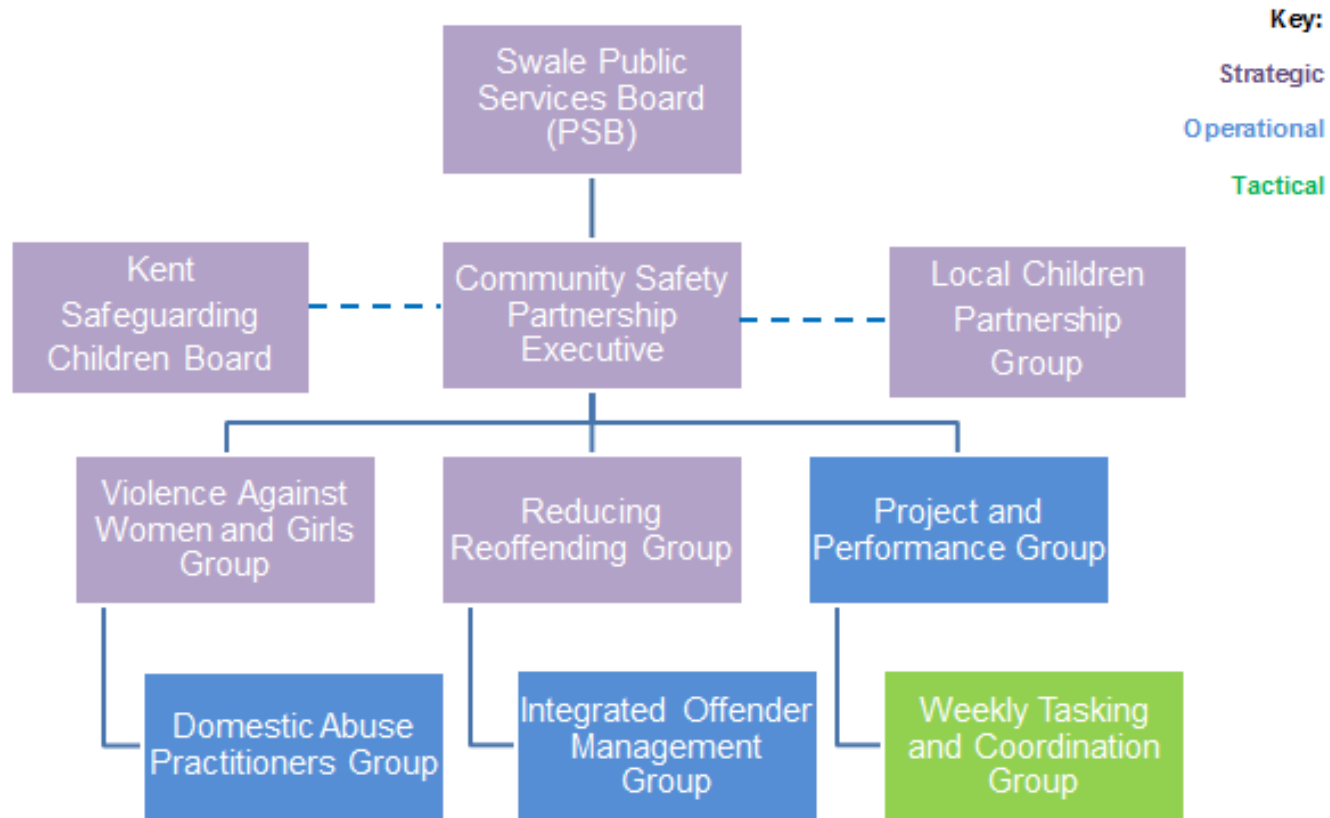
10. Risk Assessment 2016/17

The creation and monitoring of the risks associated with the Community Safety Plan will be undertaken in line with Swale Borough Council's Risk Management Procedures.

Ref	Risk	Score	Implications	Controls	Score Post control	Risk Mitigated
1.0	Sustainability of local domestic abuse services	3*3=9	Lack of consistent funding for a number of domestic abuse support services causes an issue in their sustainability and possible access by victims.	Violence Against Women and Girls Group to monitor services within area including any finance issues. Action to be taken to support fundraising for services as required by group.	2*3=6	Risk managed.
2.0	Organisational changes and reduction in personnel due to funding reductions	4*3=12	Comprehensive Spending Review and other legislative changes impacting on partner organisations may result in organisational changes and resource availability for delivery of CSP Plan.	Executive Group to discuss organisational changes on a quarterly basis. Impacts to be considered and discussed.	3*3=6	Risk managed.
3.0	Police and Crime Commissioner elections 2016	3*3=9	A change in the elected PCC may impact on the level of Community Safety Grant provided to the CSP post-election, along with a change in Police and Crime Plan priorities.	Representative of the Office of the PCC sits on Executive Group and can raise any changes for discussion at the earliest opportunity.	3*2=6	Risk managed.

4.0	Transforming Rehabilitation and Prison Reform	2*3=6	Changes within Probation Services are ongoing and could result in further changes in representation at partnership groups and information sharing needs. Prison Reform announcements in February 2016 may impact upon Sheppey Cluster within this financial year.	Names representatives from KSS CRC, NPS and HMPS on Executive and Reducing Reoffending Group. Will be revisited if any staff are changed. Pilot prisoner release protocol in place and to be monitored by CSU to ensure information is shared with housing services. Transforming Rehabilitation standing item at Exec meetings.	2*2=4	Risk managed.
-----	---	-------	---	--	-------	---------------

11. Swale Community Safety Partnership Structure



Formalised relationships between the CSP and both the Swale Local Children Partnership Group and the Kent Safeguarding Board need to be established.